

ANTARCTICA - ANTARCTICA ACTIVE: ALL INCLUSIVE ACTIVITIES | SYLVIA EARLE



TRIP CODE

ACAESAAI

DEPARTURE

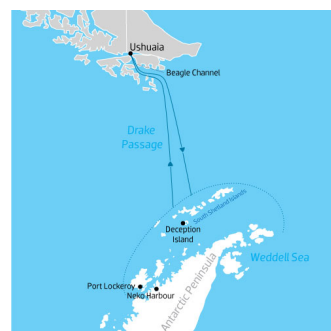
24/11/2026, 06/12/2026

DURATION

15 Days

LOCATIONS

Antarctic Peninsula, Antarctica



INTRODUCTION

This expedition itinerary, all the Antarctic adventure activities like paddling, camping, snowshoeing and snorkelling are included in the activity cost! You will gain a deeper understanding of Antarctica's beauties on this action-packed voyage. Along with the guided hikes and Zodiac excursions that are included on every trip, you will get to paddle in between icebergs in safe harbours and maybe even get up close and personal with some of the wildlife. Take a leisurely stroll with your own snowshoes and discover some amazing vistas. Pack a sleeping bag for a sleepover on the ice for the ultimate Antarctic overnight adventure. While a restful night on the ice is something we can't promise, we can assure you of an amazing experience.

ITINERARY

DAY 1: Arrive Ushuaia

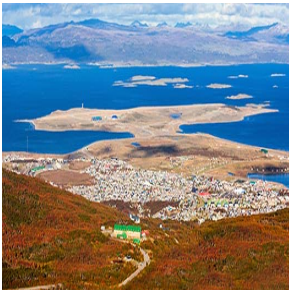
Arrive in Ushuaia, where you will be met by a representative and transferred with your fellow expeditioners to your assigned pre-voyage hotel. If you are already in Ushuaia, we ask you to make your way to your hotel. Check-in is from 3.00 pm. This afternoon, visit the hospitality desk in the hotel lobby, between 3.00 pm and 7.00 pm, to collect your luggage tags, and confirm if you wish to join our Beagle Channel and Isla de Los Lobos Cruise (sea lion island) tomorrow. Our team will confirm details regarding your embarkation day, answer any questions and provide you with information on where to dine or purchase last minute items. Expeditioners arriving after 7.00 pm will find a welcome pack waiting for them at check-in. We ask you to visit our hospitality desk tomorrow between 8.00 am - 10.00 am. The remainder of your time is at leisure. All meals today are at your own expense.



ANTARCTICA - ANTARCTICA ACTIVE: ALL INCLUSIVE ACTIVITIES | SYLVIA EARLE

DAY 2: Embarkation in Ushuaia

This morning, enjoy breakfast and check-out. Please ensure your cabin luggage is fitted with cabin tags clearly labelled with your name and cabin number. By 11.00 am take your cabin luggage to hotel reception, prior to, or at check-out. Your luggage will be stored and transferred directly to the port for clearance, to be placed in your cabin ahead of your arrival on board. Please keep any valuables or personal items with you throughout the day. Your morning is at leisure to explore Ushuaia. Those wishing to join our afternoon catamaran cruise, meet back at the hotel lobby at 12.15 pm ready to transfer to the port at 12.30 pm. Here we board our catamaran and sail the Beagle Channel, towards the city's iconic Les Eclaireurs Lighthouse. Crossing the Bridges Archipelago we'll slow down to watch colonies of sea lions and imperial cormorants sun themselves on the rocky outcrops, while gulls, rock cormorants, skuas, petrels, albatrosses and cauquenes are often sighted. Our cruise offers panoramic views of the city and the surrounding mountain range, in addition to hearing tales of the people and communities of the region. Alternatively, enjoy your day at leisure and meet at your hotel lobby at 3.00 pm, or 3.30 pm from the meeting point at the parking lot near the pier (details will be given by our ground staff at the hotel), to be transferred to the pier for embarkation. Once onboard, you'll have time to settle into your cabin before our important mandatory briefings. As the ship pulls away from port, we'll gather on the deck to commence our adventure with spectacular views over Ushuaia and Tierra del Fuego. This evening get to know your fellow expeditioners and friendly expedition team and crew at a welcome dinner to celebrate the start of a thrilling adventure to Antarctica.



TRIP CODE

ACAESAAI

DEPARTURE

24/11/2026, 06/12/2026

DURATION

15 Days

LOCATIONS

Antarctic Peninsula, Antarctica




ANTARCTICA - ANTARCTICA ACTIVE: ALL INCLUSIVE ACTIVITIES | SYLVIA EARLE

DAY 3: Crossing the Drake Passage - Day 3 & 4

As we commence the Drake Passage crossing, we make the most of our time getting comfortable with the motions of the sea. Our expedition team prepare you for our first landing with important wildlife guidelines and biosecurity procedures and start our lecture program to help you learn more about Antarctica’s history, wildlife and environment. Our wildlife experiences begin as we enjoy watching and photographing the many seabirds, including majestic albatrosses and giant petrels following our vessel. On sea days, you can enjoy the facilities on board the vessel including the gym, sauna and jacuzzis or relax in one of the observation lounges. Nearing the South Shetland Islands and the tip of the Antarctic Peninsula on the afternoon of day four, the excitement is palpable with everyone converging on one of the observation decks watching for our first iceberg. The ocean takes on a whole new perspective once we are below the Antarctic Convergence and are surrounded by the surreal presence of floating ice sculptures. The memory of your first big iceberg sighting is likely to remain with you for a lifetime. Time and weather permitting, we may attempt our first landing in Antarctica by late afternoon.



TRIP CODE
ACAESAAI
DEPARTURE
24/11/2026, 06/12/2026
DURATION
15 Days
LOCATIONS
Antarctic Peninsula, Antarctica


ANTARCTICA - ANTARCTICA ACTIVE: ALL INCLUSIVE ACTIVITIES | SYLVIA EARLE

DAY 5: Antarctic Peninsula - Day 5 to 11

It's almost impossible to describe the feeling of arriving in Antarctica. Spotting your first iceberg and taking a deep breath of some of the most fresh, crisp air on earth is an experience that will stay with you forever. The Antarctic Peninsula is a bustling metropolis of wildlife in late spring, but despite the frenetic pace of life for the locals, you have ample time to immerse yourself in the wonders of surrounding environment. Over the next eight days you will settle into the natural rhythms of life in the Antarctic Peninsula. With extra time for exploration, we plan to show you our favourite spots along the peninsula and possibly discover new future favourites along the way. Once we arrive, the western side of the Antarctic Peninsula and the South Shetland Islands are ours to explore, and we have a host of choices available to us. Because we are so far south, we will experience approximately 18-24 hours of daylight and the days can be as busy as you wish. Your experienced expedition team, who have made countless journeys to this area, will use their expertise to design your voyage from day to day, choosing the best options based on the prevailing weather, ice conditions and wildlife opportunities. We generally make landings or Zodiac excursions twice a day. You will want to rug up before joining Zodiac cruises along spectacular ice cliffs or among grounded icebergs, keeping a close watch for whales, seals and porpoising penguins. Zodiacs will also shuttle you from the ship to land, where you can visit penguin rookeries, discover historic huts and explore some of our favourite spots along the peninsula. While ashore we aim to stretch our legs, wandering along pebbly beaches or perhaps up snow-covered ridgelines to vantage points with mountains towering overhead and ice-speckled oceans below. If you have chosen an optional activity, you will have the option to do participate in the activity whenever conditions allow, and of course keen polar plungers will have the chance to fully immerse themselves in polar waters - conditions permitting! The polar plunge can take place at any time during the voyage, so listen out for the announcement from the expedition team and get ready for the most exhilarating dip of your life! In addition to Zodiac cruises and shore excursions, we may ship cruise some of the narrow, dramatic straits separating offshore islands from the mainland, or linger in scenic bays to marvel at sculptural icebergs and photograph spectacular scenery. This is a great time to enjoy the observation lounge or make your way to the bridge (open at the captain's discretion) for uninterrupted views of Antarctica in all its splendour. Listen out for the creak and deep rumble of glaciers as they carve into sea. Take a quiet moment to experience the wonder of the pristine paradise of the splendid white continent.



TRIP CODE

ACAESAAI

DEPARTURE

24/11/2026, 06/12/2026

DURATION

15 Days

LOCATIONS

Antarctic Peninsula, Antarctica



ANTARCTICA - ANTARCTICA ACTIVE: ALL INCLUSIVE ACTIVITIES | SYLVIA EARLE

DAY 12: Crossing the Drake Passage - Day 12 & 13

Enjoy a final morning landing in the South Shetland Islands before we re-enter the Drake Passage for our return journey to South America. With lectures and film presentations to complete our Antarctic experience, there is still plenty of time to enjoy the magic of the Southern Ocean and the life that calls it home. There is time for reflection and discussion about what we have seen and experienced. We hope you become ambassadors for Antarctica telling your family, friends and colleagues about your journey to this magical place, advocating for its conservation and preservation so that they might one day visit the region to experience what you have been lucky to see and do here. As we approach the tip of South America, our Captain may sail close to legendary Cape Horn, weather and time permitting.



DAY 14: Disembark in Ushuaia

During the early morning, we cruise up the Beagle Channel, before quietly slipping into dock in Ushuaia, where we will be free to disembark around 8.00 am. Farewell your expedition team and fellow passengers as we all continue our onward journeys, hopefully with a newfound sense of the immense power of nature. Upon disembarkation, for those continuing their travels in the region, transportation to the hotel will be arranged exclusively for guests who have booked their accommodations through Aurora or for those staying in downtown areas near the port. Expeditioners departing on flights prior to 12:30 pm will be directly transferred to Ushuaia Airport, those with flights after 12:30 pm will have the opportunity to explore Ushuaia before an afternoon airport transfer, and the transfer procedures and details will be communicated onboard before disembarkation. Note: At the conclusion of the voyage, we do not recommend booking flights departing Ushuaia prior to 12.00 pm on the day of disembarkation in case there are delays.



TRIP CODE

ACAESAAI

DEPARTURE

24/11/2026, 06/12/2026

DURATION

15 Days

LOCATIONS

Antarctic Peninsula, Antarctica



INCLUSIONS & DETAILS

Accommodation	Hotel & Cabin Onboard a Ship
---------------	------------------------------

ANTARCTICA - ANTARCTICA ACTIVE: ALL INCLUSIVE ACTIVITIES | SYLVIA EARLE

Inclusions

All airport transfers mentioned in the itinerary
 1 Night hotel accommodation including breakfast in Ushuaia, pre-cruise Day 1
 Half-day tour of Ushuaia on Day 2, prior to embarkation.
 Cabin accommodation on board Sylvia Earle
 All meals whilst on board ship
 All scheduled landings & excursions
 Guiding and lectures by English-speaking expedition leader and team
 All port fees
 All landing fees
 Expedition jacket provided (yours to keep)
 A pair of expedition boots for use during voyage
 Group arrival and departure transfer in Ushuaia

Inclusions

Exclusions

Airfares to and from embarkation/disembarkation city
 Visa fees (if applicable)
 Travel insurance
 Beverages (other than tea and coffee)
 Personal expenses such as laundry, on board communication (telephone calls, email)
 Pre or post cruise travel expenses
 Optional activities
 Gratuities for ship's crew - (A \$15 USD per person per day gratuity for the crew is automatically added to your onboard account. It is at your discretion if you would like to remove the tip (or adjust the amount) when you settle your bill. It is not necessary to tip the expedition team members. This gratuity amount is included for suites as part of their 'Suite Benefits'.)

Difficulty Rating

2 (light adventure)

Single Surcharge

Available upon request. A supplement surcharge applies and is subject to availability. Please [contact us](#) for more information.

Notes

Prices are based on per person, twin share* (unless otherwise stated for triple/quad cabins) .
 Prices are correct at time of publishing but are subject to change at any time.
 Itinerary is subject to change depending on weather and ice conditions.

Price Dependent upon

Departure date, fuel surcharges, cabin category, currency fluctuations, seasonality and availability.

TRIP CODE

ACAESAAI

DEPARTURE

24/11/2026, 06/12/2026

DURATION

15 Days

LOCATIONS

Antarctic Peninsula, Antarctica



SUSTAINABILITY