

THE ARCTIC - INTO THE NORTHWEST PASSAGE 2025 | OCEAN ENDEAVOUR



INTRODUCTION


Welcome to the Northwest Passage for the 2025 season. This is one of the world's most epic Arctic journeys and will take you through fjords, icebergs, glaciers and historic sites. Look out for the wildlife which call this route home: polar bears, seabirds and marine mammals. You will sail aboard the spacious Ocean Endeavour for 17 days which allows plenty of time to relax into life at sea. Excursions include visits to Nunavut's communities, hiking, photography, bird watching and there will be lectures from the onboard team of experts. This itinerary will take you to the top of the world, starting in Toronto, flying to Kangerlussuaq, Greenland and ending in Kugluktuk, Nunavut, Canada, before your flight to Calgary.

Mandatory charter flight information and cost:

2025 DEPARTURE:

Northbound Charter Flight: Toronto, ON, Canada to Kangerlussuaq, Greenland. Early-morning departure. Price USD\$1,450 per person.
 Southbound Charter Flight: Kugluktuk (Coppermine), NU, Canada to Yellowknife, NT, Canada. Evening departure. Price USD\$1,000 per person.

ITINERARY

TRIP CODE
ACADINWP
DEPARTURE
16/08/2025
DURATION
17 Days
LOCATIONS
Greenland & Canadian Arctic


THE ARCTIC - INTO THE NORTHWEST PASSAGE 2025 | OCEAN ENDEAVOUR

DAY 1: Kangerlussuaq, Greenland

Your journey begins in Kangerlussuaq, a former U.S. Air Force base. After our (optional) charter flight from Toronto, we will transfer to the ship by Zodiac. Please note that the cost of the charter flight package is not included in the advertised cruise price and an additional cost applies. With 190 kilometres of superb scenery, Kangerlussuaq Fjord (Søndre Strømfjord) is one of the longest fjords in the world. We begin our adventure by sailing down this dramatic fjord, crossing the Arctic Circle as we go.



DAY 2: Sisimiut - Days 2 to 3

Colourful Sisimiut is Greenland’s second largest city. Access the museum through a towering whalebone archway and be sure to stop in at the artisan’s studio for the chance to purchase outstanding handicrafts. Traditional qajaq (kayaking) is in resurgence here, and there are plenty of other fun outdoor activities for the adventurous to enjoy.



DAY 4: Ilulissat

Experience the remarkable beauty of Ilulissat Icefjord, renowned for its enormous icebergs. Ilulissat means “iceberg”—an apt name for this site at the outlet of the Sermeq Kujalleq glacier. It is a UNESCO World Heritage Site and the source of many of the icebergs in the North Atlantic. Marvel at the sheer grandeur of the towering ice formations as you take a stroll along the boardwalk—truly a sight to behold! Visit the town, with its captivating museums, charming cafes, craft shops, and bustling fishing harbour. Be sure to make your way to the Ilulissat Icefjord Centre, where you can delve into the fascinating narratives surrounding the ice and gain a deeper appreciation for this awe-inspiring natural wonder.



TRIP CODE

ACADINWP

DEPARTURE

16/08/2025

DURATION

17 Days

LOCATIONS

Greenland & Canadian Arctic



THE ARCTIC - INTO THE NORTHWEST PASSAGE 2025 | OCEAN ENDEAVOUR

DAY 5: Western Greenland

Exploring by ship and Zodiac along the west coast of Greenland, we have numerous options for expedition stops, to make the most of weather and wildlife conditions. Whether you're setting foot on land, cruising by Zodiac, or out on the ship's deck, you'll have plenty of chances to learn alongside expert geologists, naturalists, and marine biologists. With Inuit expedition team members at your side, you'll gain an intimate perspective on the abundant flora and fauna you encounter. Take a moment to savour the tranquility and absorb the knowledge and stories shared by Inuit cultural educators, which will deepen your connection to this breathtaking landscape. Departing Greenland, we cross Baffin Bay toward Nunavut.



DAY 6: At Sea - Davis Strait

As we sail toward Nunavut, our expedition team will deepen your understanding of the Arctic. This is an excellent time to enjoy workshops, watch a documentary, or get out on deck. Keep your binoculars ready for minke and humpback whales, as well as the seabirds that are sure to mark our passage. Take the unique opportunity to learn from Inuit in their homeland, gaining a better understanding of the daily lives of the regions we visit. Enjoy cultural performances and maybe even participate in Inuit games, or sample country food. Through shared experiences and interactions, develop a deep appreciation for the region's vibrant culture and gain a profound connection to the stunning landscapes we traverse.



DAY 7: Mittimatalik (Pond Inlet), NU, Canada

Attend a cultural performance put on by the talented Tununiq Arsarniit Theatre Group, featuring drum dancing, throat singing, and storytelling. Mittimatalik is a busy Arctic community in a beautiful setting—the views of nearby Bylot Island are stunning! Enjoy exploring the town and take the opportunity to purchase unique handcrafted mementos when available, too.



TRIP CODE

ACADINWP

DEPARTURE

16/08/2025

DURATION

17 Days

LOCATIONS

Greenland & Canadian Arctic



THE ARCTIC - INTO THE NORTHWEST PASSAGE 2025 | OCEAN ENDEAVOUR

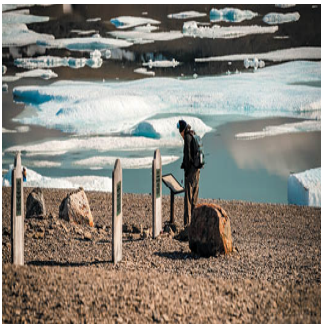
DAY 8: Lancaster Sound & Devon Island - Days 8 to 9

We will spend ample time exploring Tallurutiup Imanga (Lancaster Sound), one of the newest National Marine Conservation Areas in Nunavut. Narwhal, beluga, and bowhead whales transit and feed in this area. Cruise by ship and Zodiac in search of wildlife with expert biologists and ecologists. Learn more about the crucial role Inuit play in conserving the vibrant biodiversity of these waterways and the enduring connection between the ocean and Inuit. On the northern border of Tallurutiup Imanga lies Devon Island, the largest uninhabited island on Earth at over 50,000 square kilometres. Flat-topped mountains, glacial valleys, and a substantial ice cap give Devon Island its unique character. We will hike the tundra, cruise a glacier face, and seek wildlife from the ship and on shore. Visit archaeological sites and the remains of an RCMP and Hudson's Bay Company site at Dundas Harbour.



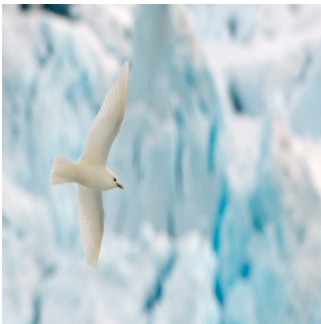
DAY 10: Beechey Island

In 1845, Sir John Franklin set out from England with HMS Erebus and HMS Terror, attempting to sail through the Northwest Passage. His crew overwintered at Beechey Island, where three of his men died. Numerous search parties later used Beechey as a depot and rendezvous. Amundsen, Bernier, and Larsen visited Beechey. Thomas Morgan of the HMS Investigator was buried here in 1854 alongside Franklin's men. The graves and ruins of Northumberland House are a haunting memorial.



DAY 11: Prince Regent Inlet

This passage marks an area rich in marine and avian life. Thick-billed murres, ivory gulls, beluga whales, narwhals, and bowhead whales reside in the ice-strewn waters. In addition to abundant wildlife, we'll delve deeper into the exploration of the Northwest Passage and mercantile efforts of the Hudson's Bay Company.



TRIP CODE

ACADINWP

DEPARTURE

16/08/2025

DURATION

17 Days

LOCATIONS

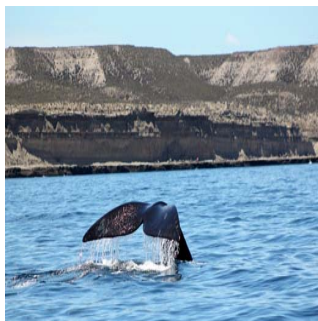
Greenland & Canadian Arctic



THE ARCTIC - INTO THE NORTHWEST PASSAGE 2025 | OCEAN ENDEAVOUR

DAY 12: Ikirahaq (Bellot Strait)

Discover the famed Bellot Strait, a narrow passage separating Somerset Island from the Boothia Peninsula. As we sail through this two-kilometre-wide waterway, get the unique opportunity to reach the northernmost part of mainland North America. Keep watch for an array of enchanting marine mammals from beluga whales to narwhals and seals. Delve into the region's fascinating history and learn about Joseph René Bellot, French naval officer and Arctic explorer who joined an 1850s expedition in search for Sir John Franklin, who inspired the strait's namesake.



DAY 13: Kitikmeot Region - Days 13 to 16

Navigate the ice-strewn waters of this fabled waterway in search of wildlife. Although this is Nunavut's least-populated region, wildlife abounds here both in the sea and on land. Visit a local community where Inuit hosts will share their knowledge of their home and the area's history. Discover the legacy of this important waterway and the captivating story of Roald Amundsen, who overwintered in the bay for two years while searching for the Northwest Passage. Learn more about the triumphs of explorers like Amundsen and the vital role that Inuit knowledge played in successful crossings.



DAY 17: Kugluktuk, NU, Canada

Located at the mouth of the Coppermine River, Kugluktuk is the westernmost community in Nunavut. Known for many years as Coppermine, the community reverted to its original Inuinnaqtun name, meaning "place of moving waters", on January 1st, 1996. Iqaluktuuttiaq (Cambridge Bay), NU, is an alternate disembarkation point, and may be used based on sea, ice, and weather conditions. Today we will disembark and make our way to the airport to meet the (optional) charter flights to Yellowknife, NT. Please note the cost of the charter flights is not included in the advertised cruise fare and an additional cost applies.



TRIP CODE

ACADINWP

DEPARTURE

16/08/2025

DURATION

17 Days


LOCATIONS

Greenland & Canadian Arctic



INCLUSIONS & DETAILS

Accommodation	Cabin On board a Ship
Inclusions	<div> INCLUSIONS Cabin aboard the Ocean Endeavour All meals on board Applicable taxes and credit card fees Complimentary expedition jacket Special access permits, entry, and park fees Expert expedition team Guided activities Sightseeing and community visits All Zodiac excursions Port fees Pre-departure materials Educational program Interactive workshops Evening entertainment </div> <div> EXCLUSIONS Mandatory Charter flights (please see notes for more details) International Flights Program enhancements/optional excursions Gratuities Personal expenses Mandatory medical evacuation insurance Additional expenses in the event of delays or itinerary changes Possible fuel surcharges and administrative fees Any pre or post land arrangements </div> <div> Mandatory charter flight information and cost: 2025 DEPARTURE: Northbound Charter Flight: Toronto, ON, Canada to Kangerlussuaq, Greenland. Early-morning departure. Price USD\$1,450 per person. Southbound Charter Flight: Kugluktuk (Coppermine), NU, Canada to Yellowknife, NT, Canada. Evening departure. Price USD\$1,000 per person. </div>
Difficulty Rating	2 (light adventure)
Single Surcharge	Subject to availability upon request. Contact us for more details. No single supplement on a limited quantity of cabins in categories 3-7. Once these cabins are sold, the single supplement fee is 1.5 times the berth cost. Single occupancy in categories 8-10 is available at full double-occupancy rates. Subject to cabin availability.

TRIP CODE
ACADINWP
DEPARTURE
16/08/2025
DURATION
17 Days
LOCATIONS
Greenland & Canadian Arctic


THE ARCTIC - INTO THE NORTHWEST PASSAGE 2025 | OCEAN ENDEAVOUR

Notes	<p>Mandatory charter flight information and cost:</p> <p>2025 DEPARTURE:</p> <p>Northbound Charter Flight: Toronto, ON, Canada to Kangerlussuaq, Greenland. Early-morning departure. Price USD\$1,450 per person.</p> <p>Southbound Charter Flight: Kugluktuk (Coppermine), NU, Canada to Yellowknife, NT, Canada. Evening departure. Price USD\$1,000 per person.</p>
	<p>Prices are based on per person, may be based on quad/triple/twin share.</p> <p>Prices are correct at time of publishing but are subject to change at any time.</p> <p>Itinerary is subject to change depending on weather and ice conditions.</p>
Price Dependent upon	<p>Departure date, fuel surcharges, cabin category, currency fluctuations, seasonality and availability.</p>

SUSTAINABILITY

TRIP CODE
ACADINWP
DEPARTURE
16/08/2025
DURATION
17 Days
LOCATIONS
Greenland & Canadian Arctic
